



Temperature Connect

IoT Mobile Temperature Monitor



Temperature - WiFi Monitor

This product T-α operates independently in the "Temperature Report App" temperature value notification system to monitor whether the "control system" in the equipment is malfunctioning, power failure or abnormal.



WiFi connection, plug-and-play

Features >>

- Fresh Food : large-scale freezer and refrigeration equipment, fish storage, fruit storerooms, supermarkets, convenience stores.
- Medical : Refrigerated storage equipment, blood serum storage equipment.
- Biotechnology : laboratory refrigeration equipment.
- Industrial temperature control equipment.
- Vaccine preservation equipment.



Application >>

- The temperature sensor detects the temperature of the device in real time. Its' data values are reported to users and displayed simultaneously on the mobile phone. Moreover, the data values are kept in order to process further analysis and anomaly detection, thus operators can take countermeasures to avoid losses.
- WiFi connection, plug-and-play, hook-and-loop fastener for quick fix, simple DIY installation, no extra wiring, fast connection set-up, cost-effective products.
- Innovative IoT service solution, mobile APP, best temperature accuracy & precision and record tracking.

(Another custom temperature and humidity sensing function)

Advantage >>



Convenient

Remote monitoring



Management

Reduce manpower



Indeed

Temperature record



Risk

Avoid financial losses



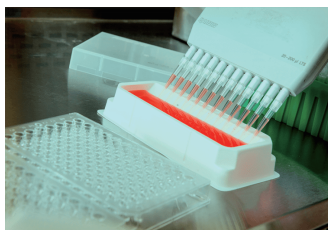
Immediate

Active exception Announce



Simple

Can be installed in old freezer In equipment



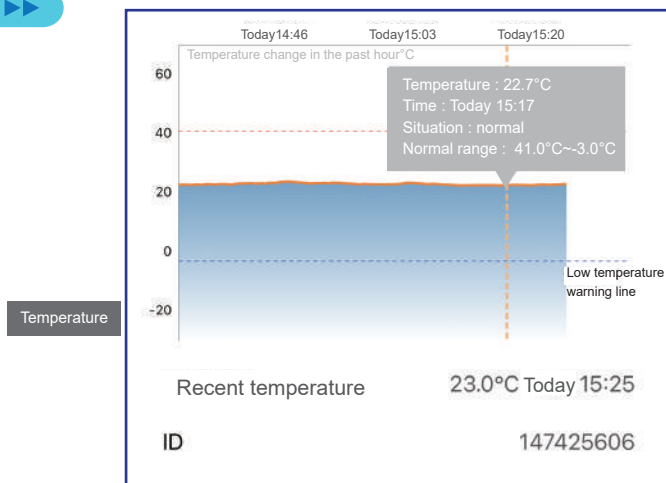


When either its' temperature value exceeds the limit or Internet connection is disconnected/unstable, mobile App will be notified immediately.



Cloud Server Panel

Time indication



Specification

Model	Temperature monitor WiFi Gateway (T-α)
Signal indication	Red LED (POWER LED) : Continuously on after power on (MCU is operating normally). Green LED (WiFi LED) : Continuously on when connected to WiFi AP, otherwise blinks. Blue LED (TCP LED) : Continuously on when connected to the server, otherwise blinks.
Working power	micro USB 5V (< 2W)
LED indicator	R.G.B x 1 each
Receiving distance (conservative value)	25m
Transmission method	WiFi signal transmission
External dimensions	H75 / W35 / D11 (mm)
Weight	45g
Waterproof	None (Not for outdoor use)
Other accessories	85~220vAC adpater / USB 5v 1A x 1 micro USB cable x 1
Occasion / Purpose	Best for install in freezer, refrigerator or other equipment
Fixing method	Hook and loop fastener.
Temperature detecting range	-30~70°C (Temp. resolution 0.5 °C / Temp. tolerance ±1°C) NTC temperature sensing wire 6φ x 30mm stainless steel probe, cable length 1.5M (Optional : 3, 5, 10M)



- A WiFi AP is required on site in order to establish an Internet connection.
- We can customize application designs according to customer needs.



CANNEX TECHNOLOGY INC.

Since1991
Design and manufacture
/ Made in Taiwan

http://www.akr.com.tw
Tel : +886-4-861-3883(Rep) Fax: +886-4882-8209
Add: No.182, Sec.2, Yuanlu Rd., Sihua, Changhua,
51449, Taiwan

Copyright © 2020.02 Cannex Technology, Inc. All rights reserved.

